



CSBB 641

HORN / STROBE BACK BOX

For GE Security Genesis G1 Series

DESCRIPTION

The CHASE SECURITY BACK BOX has been designed to make installation fast and simple. The two part design reduces installation cost and labor as well as making it easy to service once installed. Boxes designed for wall mount or electrical box installations. It is designed for Prisons, HUD Projects, Universities, Hotels, Parks, Schools, Hospitals, and other public locations where both functionality and aesthetics count.

For over 30 years Chase custom metal products have been manufactured in a variety of sizes, styles and finishes, and sold to OEM accounts and distribution.

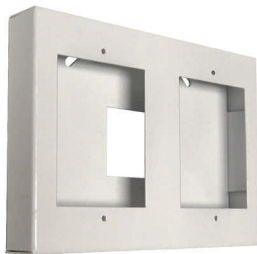


Back Box & Skirt pictured with Genesis G1 Series Chime Strobe

Can be used in a variety of applications.



Supports Dual-device G1 Chime Strobes



FEATURES

- ◆ Constructed of quality 16-gauge steel.
- ◆ Welded at all sides with reinforcement for a solid unit construction.
- ◆ Finish: white, red, blue or yellow epoxy coating.
- ◆ Dimensions I.D. 6 1/2" x 4 5/8" x 1" deep.
- ◆ Easy to install.
- ◆ Mounting tabs at base allow face plate to be easily lifted and removed for servicing.
- ◆ Back box can be mounted to either wall or electrical box.
- ◆ Additional 3" deep models available for surface mount electrical boxes with exposed conduit pipe.
- ◆ Chase custom designs and builds to your specifications.

ACCESSORIES

- ◆ Matching custom face plates available for different applications.

Chase Security Systems, Inc., an **MBE Enterprise**, draws from over 30 years of experience selling to the Fire, Security, Computer, Sound, Food Processing, Forestry, Communications and Telecommunications industries. Many of our signature products are now being produced by other manufacturers but our custom metal boxes are still the product of choice for their strength.

P.O. Box 30179, Chicago, IL 60630,
Phone 773.775.7148, Fax 773.594.0078

www.chasesec.com

© 2006 Chase Security Systems, Inc.



Made with Pride in the U.S.A.

Due to changes in industry, exact product dimensions and features may differ slightly from above.