



## SP 104

### SERVICE PLATE

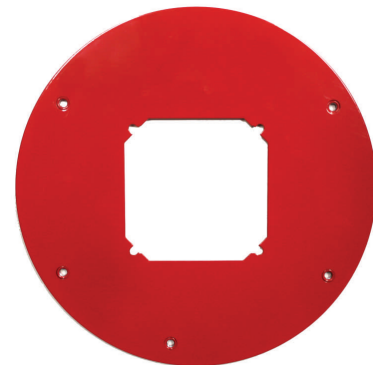
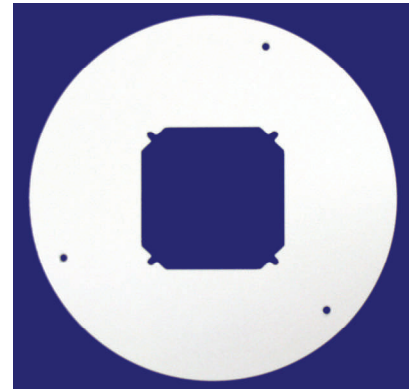
For Chase Security Models: CSGW 864  
& SGW 864 or CSGWS 73

#### DESCRIPTION

The CHASE SECURITY SERVICE PLATE has been designed to fit a variety of applications in warehouses, above ceilings, poles and special areas where a bridge is required. Unit can be surface or recessed. Complete knockouts are provided for electrical box screws and for wire service.

The steel service plate provides strength and ease of installation and maintenance of equipment once installed. For over 30 years Chase Security products have been manufactured in a variety of sizes, styles and finishes, and sold to OEM accounts and distribution. They are installed by Government Institutions, Prisons, HUD, Projects, Universities, Hotels, Parks, Schools, Hospitals, and other public locations where both functionality and aesthetics count.

\*Consult our [website](#) or catalog for more info on applicable models..



#### FEATURES

- ◆ Constructed of quality 16-gauge steel.
- ◆ Knockouts provided for wiring and electrical box screws.
- ◆ Works with a variety of Chase guards.\*
- ◆ Finish: White or red polyester coating.
- ◆ Dimensions: 10" diameter wide, 3.875" X 3.875" knockout.
- ◆ Supplied with a variety of custom provisions for equipment.
- ◆ All units are uniquely built based on individual device specs.

*Chase Security Systems, Inc., an MBE Enterprise, draws from over 30 years of experience selling to the Fire, Security, Computer, Sound, Food Processing, Forestry, Communications and Telecommunications industries. Many of our signature products are now being produced by other manufacturers but our steel hoods are still the product of choice for their strength.*

P.O. Box 30179, Chicago, IL 60630,  
Phone 773.775.7148, Fax 773.594.0078

[www.chasesec.com](http://www.chasesec.com)

© 2006 Chase Security Systems, Inc.



Made with Pride in the U.S.A.

Due to changes in industry, exact product dimensions and features may differ slightly from above.